



**APACHE**  
STAINLESS EQUIPMENT  
CORPORATION



**SMALL VESSELS**  
**COMPLIANCE ENGINEERED**





# APACHE STAINLESS EQUIPMENT CORPORATION

## Experts in Compliance Engineering

Engineering compliant vessels manufactured to precise code and specifications is what we do. Our service is a partnership where we work to understand the customer's goals and the parameters of each project and use our expertise to engineer and manufacture successful and fully compliant tanks and vessels.



### Experience

Apache has been engineering and manufacturing custom vessels since 1976. Our vessels are used in pharmaceutical, life sciences, biotechnology, chemical, health, semiconductor, power generation and transportation industries.

Known for custom tanks and vessels, Apache's small vessel team are experts at managing customers through compliance requirements and manufacturing to those exact specifications.

- ASME Vessels
- API – 650 Tanks
- Custom Mix Tanks
- Storage Tanks
- Jacketed Vessels
- Agitated Vessels
- Heat Exchange Surfaces
- Extraction Equipment
- Evaporators



### Quality & Control

Apache's facility is fully equipped with nimble manufacturing processes to efficiently manufacture custom small vessels with all processes in-house.

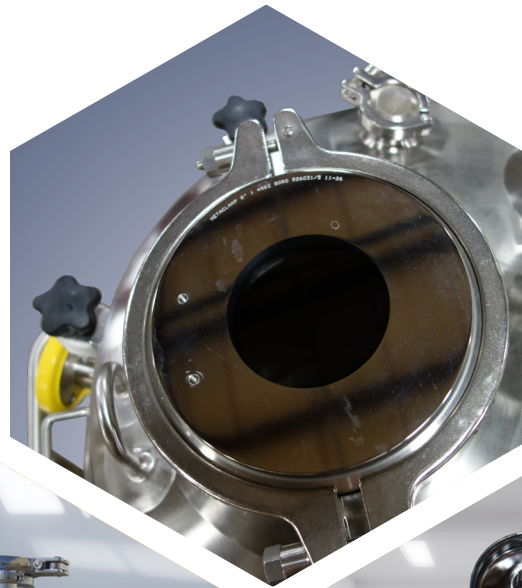
With a legacy of compliance engineering and manufacturing, comes a dedicated quality control program. We have excellent relationships with inspectors, government agencies and compliance officers to keep your project moving forward. We have a robust quality assurance team with plant-wide initiatives for continuous improvement. Our entire company, from our compliance and quality engineers to our ASME welders know how to facilitate ASME and other global compliance regulations.



### Service

We are committed to be a service champion, and by talking to and surveying customers we are creating a service strategy that fully upholds quality and support of compliance vessels.

Our field services teams are highly experienced with ASME fabrication and R-Stamp repair. Whether on-site or in our factory, we provide a range of services from troubleshooting to modifications to give customers the most favorable uptime as possible.





## APACHE COMPLIANCE DRIVEN SANITARY TANKS

Compliance engineering and fabrication for Pharmaceutical, Biotechnology, and Hygienic Industries

We work with stringent regulatory requirements serving high-compliance industries to provide custom tanks and vessels to exact specifications.



### Experience

Our in-house processes and compliance expertise provide a competitive edge in delivering reliable and regulatory compliant custom small vessels, including:

- Heat Exchange Surfaces (conventional, dimple, 1/2 pipe, 1/3 pipe, inflated dimple and internal coils)
- Agitation systems (scraped surface, high shear, counter rotation, full sweep, turbine, bottom mount magnetic mixers)
- Sprayball sanitation
- Controls (start, stop, speed controls, temperature/pressure readouts, customizable set points, runtimes, monitoring, recipe storage)



### Compliance Standards

Apache merges the sanitation and performance of the vessel with the compliance requirements of the vessel. Our expertise in sanitary design tank derives from the pharmaceutical, biotechnology, health, food and beverage, and water filtration industries with vessel capacities ranging from one gallon to 160,000 gallons. Apache upholds the sanitary design and safety standards of:

- 3A
- ASME U and UM
- BPE
- CRN
- PED
- CE



### In-House Process Designed Around Compliance Manufacturing

We have dedicated, in-house vessel finishing capabilities, including mechanical and robotic polishing, passivation, and electropolishing.



## APACHE QUALITY & SERVICE



### Quality Assurance

Apache Stainless has a dedicated quality assurance department that focuses on full verification, testing and documentation of compliance. Our welders and inspectors are ASME certified and as a company, Apache has been ASME certified since 1975.



### Certifications

Apache's certifications include:

- ASME U Certificate of Authorization
- ASME UM Certificate of Authorization
- CE Marking Permission Certificate
- National Board of Boiler & Pressure Vessel Inspectors Certificate
- UN DOT (United Nations, Dept. of Transportation).



### Testing

Our testing capabilities include

- Pneumatic
- Hydrostatic
- Liquid Penetrant
- Saline
- CIP Coverage
- Base Metal Thickness
- Ferroxyl
- Positive Material Identification (PMI)
- Ferrite Levels
- Radiography and UT Weld Testing.



### Processes

Our processes include:

- Material Trace
- Welder Trace
- Pickling
- Passivation and Electropolishing



### Field Services

- Troubleshooting for all types of stainless and high alloy vessels
- ASME / National Board R-Stamp repair and modifications
- Surface finish repairs
- Non-code repairs and modifications including piping and heat transfer jackets
- Seal and agitation repairs and modifications
- Accessory repairs
- Head and tank shell repairs
- Leak detection
- Audit and service contracts available



### In-House Services

- Passivation (ASTM A380& A967)
- Electropolishing (ASTM B912)
- Robotic and Mechanical Polishing
- FAT (Factory Acceptance Testing)
- TOP (Turn-Over-Packets)
- Transportation

## WHY APACHE STAINLESS

Apache Stainless Equipment Corporation is an employee-owned company that has been a reliable supplier of tanks and vessels since 1975. We are experts in heavy manufacturing and we invest in our people, processes, and equipment to deliver compliance-quality stainless and high-alloy tanks and vessels to meet your industrial needs.

---

 [www.apachestainless.com](http://www.apachestainless.com)

 **920-356-9900**

 **200 W Industrial Drive  
Beaver Dam, WI 53916**

